

NOTES

NO SALVAGED BEAMS SHALL BE USED, UNLESS OTHERWISE NOTED ON THE PLANS.

NO SHOP CAMBER REQUIRED, TURN NATURAL MILL CAMBER UP.

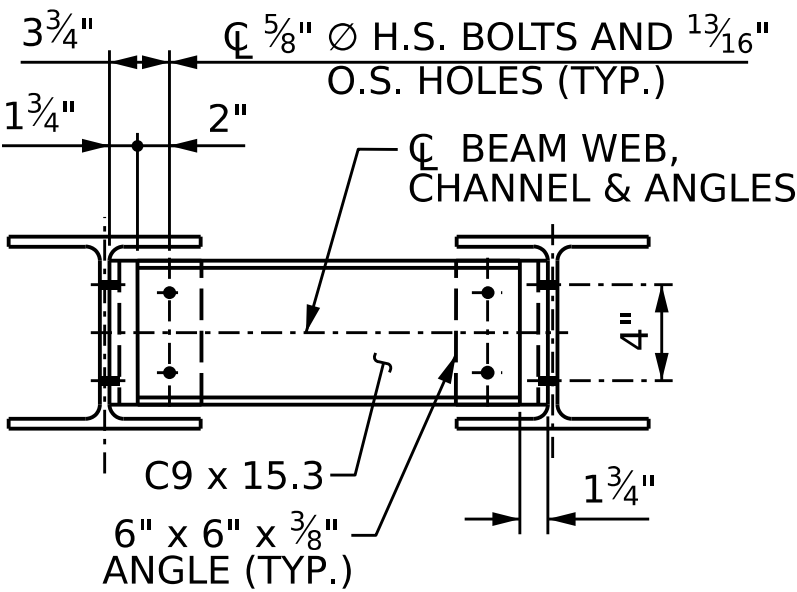
ALL STRUCTURAL STEEL FIELD CONNECTIONS SHALL BE 5/8" DIA. GALVANIZED HIGH STRENGTH BOLTS UNLESS OTHERWISE NOTED.

BEAMS SHALL BE PLACED PARALLEL TO THE CHORD.

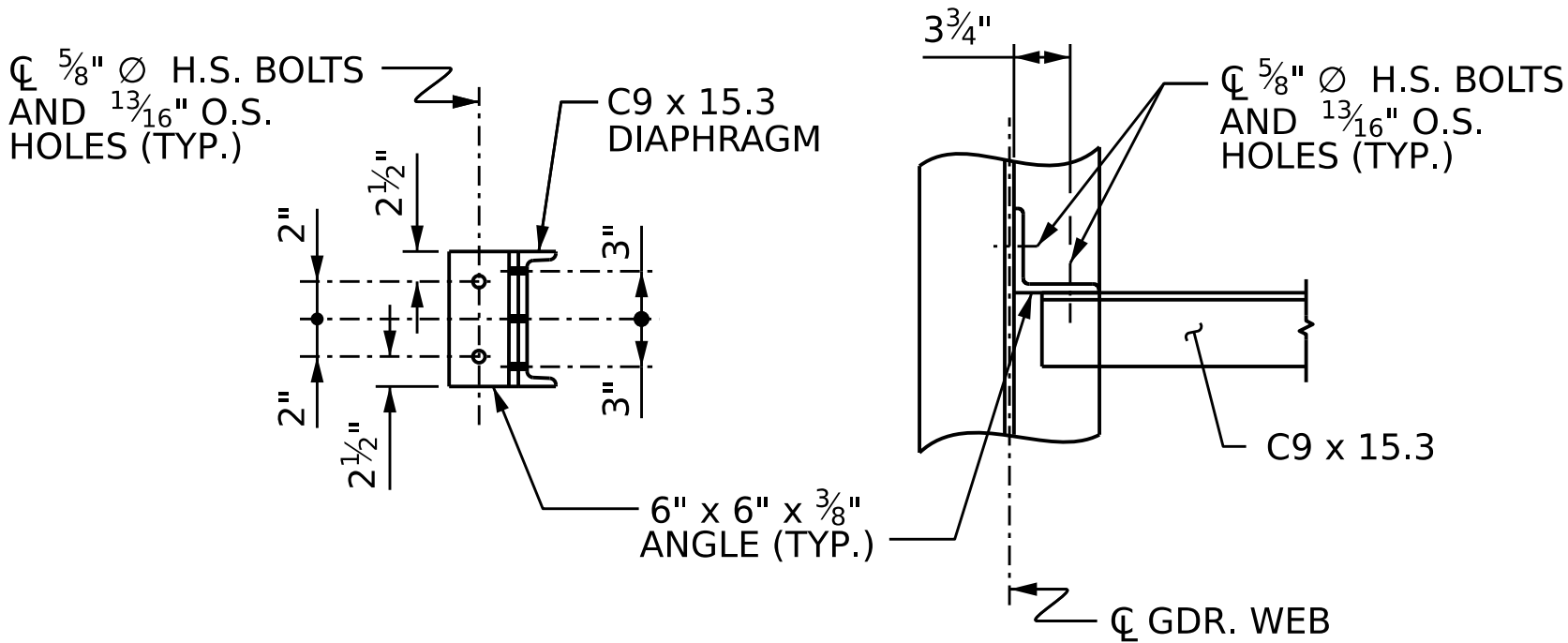
CONTRACTORS OPTION TO WELD CONNECTOR TO BEAM PRIOR TO SHOP COATING.

SEE GENERAL DRAWING NOTES FOR COATING.

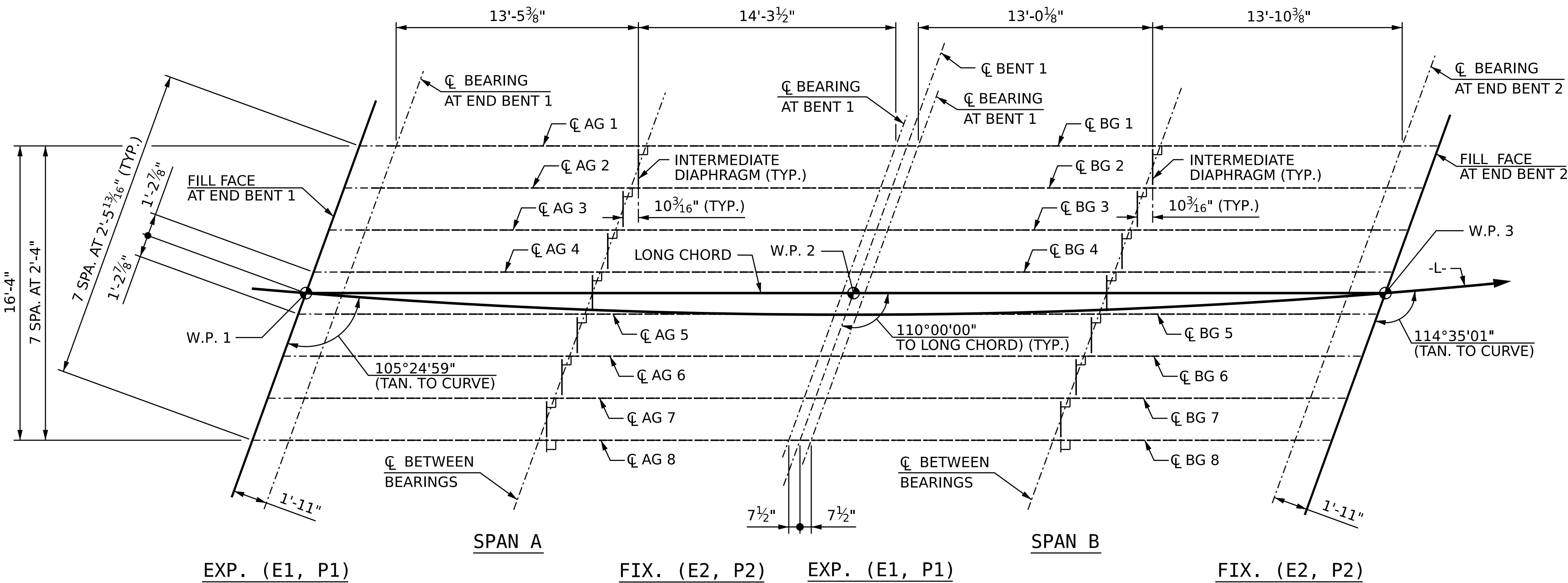
\* FOR SIZE AND LOCATION OF OPTIONAL BOLTED SOLE PLATE, SEE BEARING DETAILS SHEET.



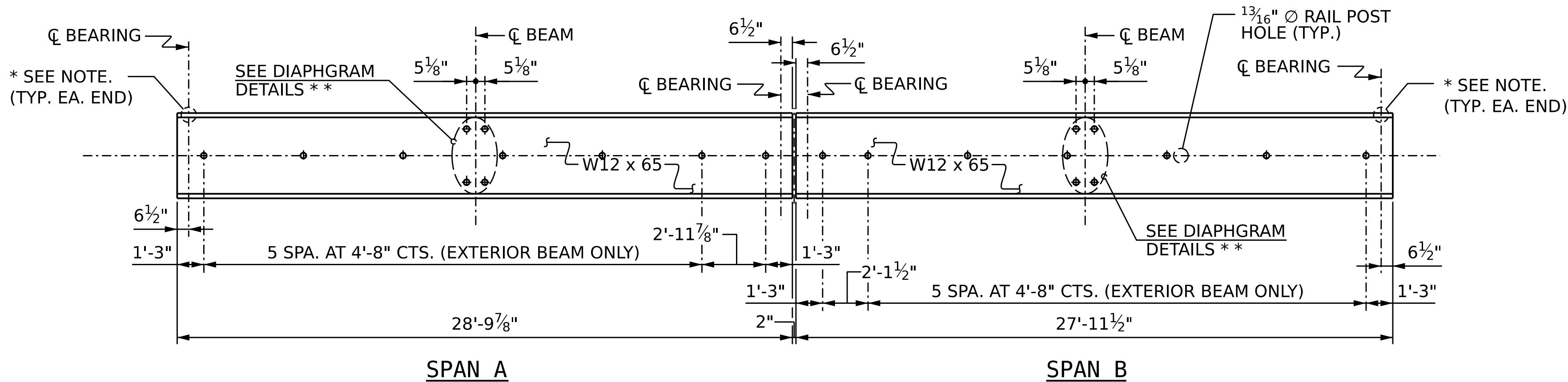
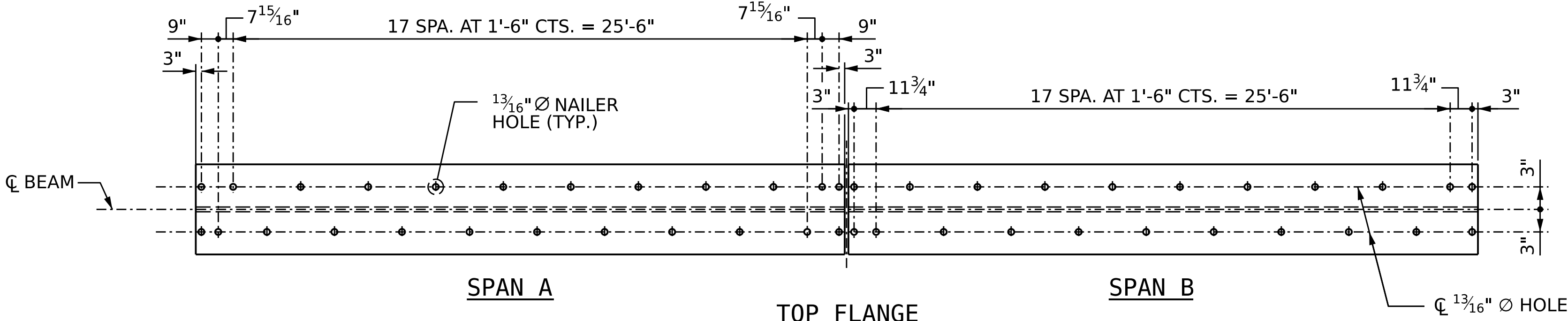
INTERIOR DIAPHRAGM DETAIL



ANGLE DETAIL



FRAMING PLAN

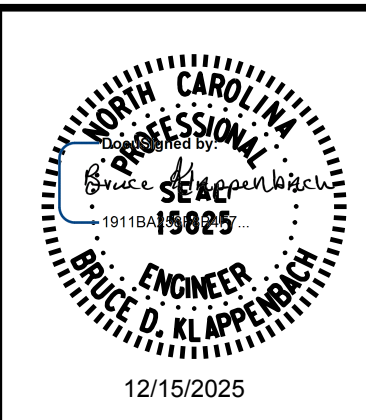


(SHOWING RAIL POST HOLES FOR EXTERIOR BEAMS  
INTERIOR BEAMS ARE SIMILAR BUT WITHOUT RAIL POST HOLES)

BEAM DETAILS

\* \* INTERIOR BEAMS SHOWN, FOR EXTERIOR BEAMS,  
PLACE REQUIRED HOLES AS SHOWN IN THE  
FRAMING PLAN

DRAWN BY :	B. H. GONFA	DATE :	JUL 2025
CHECKED BY :	B. D. KLAPPENBACH	DATE :	JUL 2025
DESIGN ENGINEER OF RECORD:	B. D. KLAPPENBACH	DATE :	JUL 2025



PROJECT NO.: 18314.1044073  
HAYWOOD COUNTY  
STATION: 12+13.00 -L-

STATE OF NORTH CAROLINA  
DEPARTMENT OF TRANSPORTATION  
RALEIGH  
SUPERSTRUCTURE  
FRAMING PLAN AND  
DIAPHRAGM DETAILS  
110° SKEW

REVISIONS					SHEET NO.
NO.	BY:	DATE:	NO.	BY:	
1			3		S-10
2			4		TOTAL SHEETS 21

DOCUMENT NOT CONSIDERED FINAL  
UNLESS ALL SIGNATURES COMPLETED